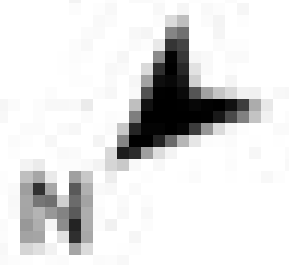


Floor Plans

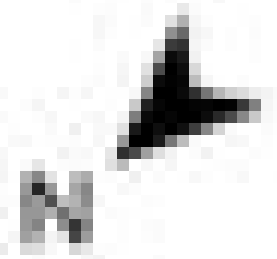
ELEVATE
BY PRESCOTT



LEVEL ONE

ELEVATE

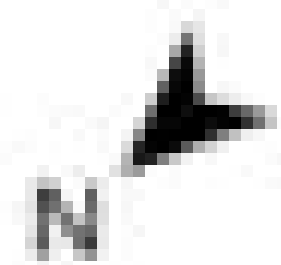
BY PRESCOTT



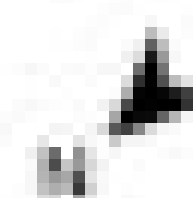
LEVEL 2ND - 5TH

ELEVATE

BY PRESCOTT

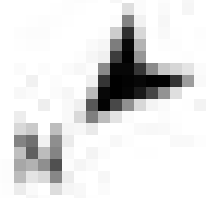


LEVEL 6TH - 15TH



STUDIO	Type A
--------	--------

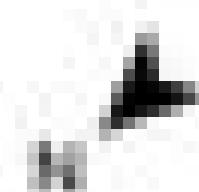
SALEABLE AREA		
	sq.m	sq.ft
Suite Area	33.35	359
Balcony Area	6.13	66
Total Area	39.48	425



1 BEDROOM

Type A

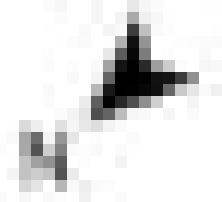
SALEABLE AREA		
	sq.m	sq.ft
Suite Area	60.67	653
Balcony Area	19.97	215
Total Area	80.64	868



1 BEDROOM

Type B

SALEABLE AREA		
	sq.m	sq.ft
Suite Area	59.09	636
Balcony Area	8.92	96
Total Area	68.00	732

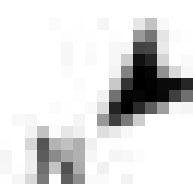


1 BEDROOM

Type C

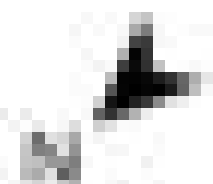
SALEABLE AREA

	sq.m	sq.ft
Suite Area	61.04	657
Balcony Area	18.77	202
Total Area	79.80	859



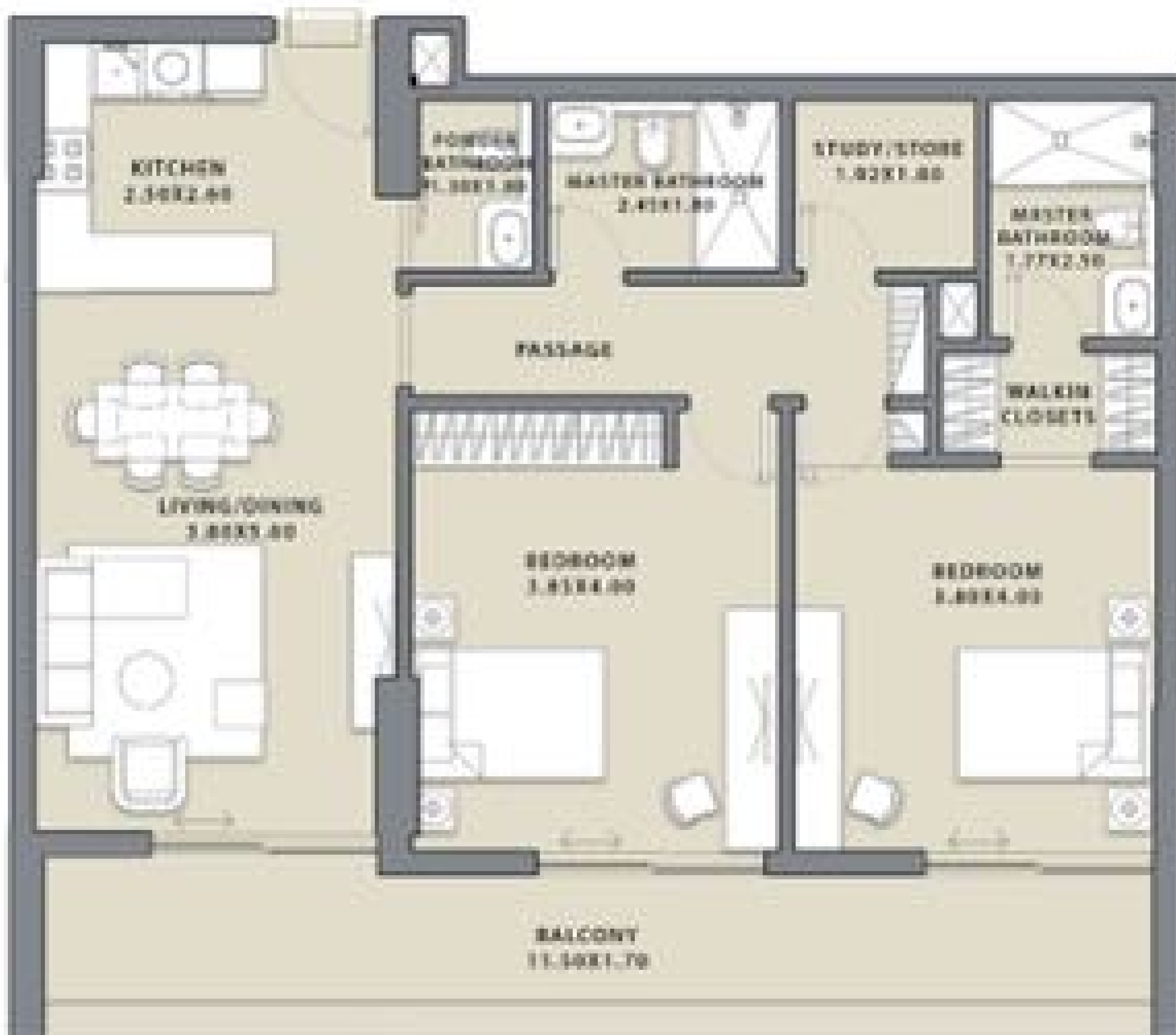
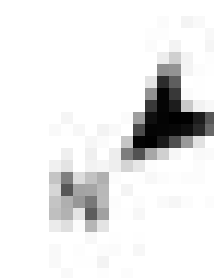
1 BEDROOM	Type D
-----------	--------

SALEABLE AREA		
	sq.m	sq.ft
Suite Area	58.34	628
Balcony Area	15.24	164
Total Area	73.58	792



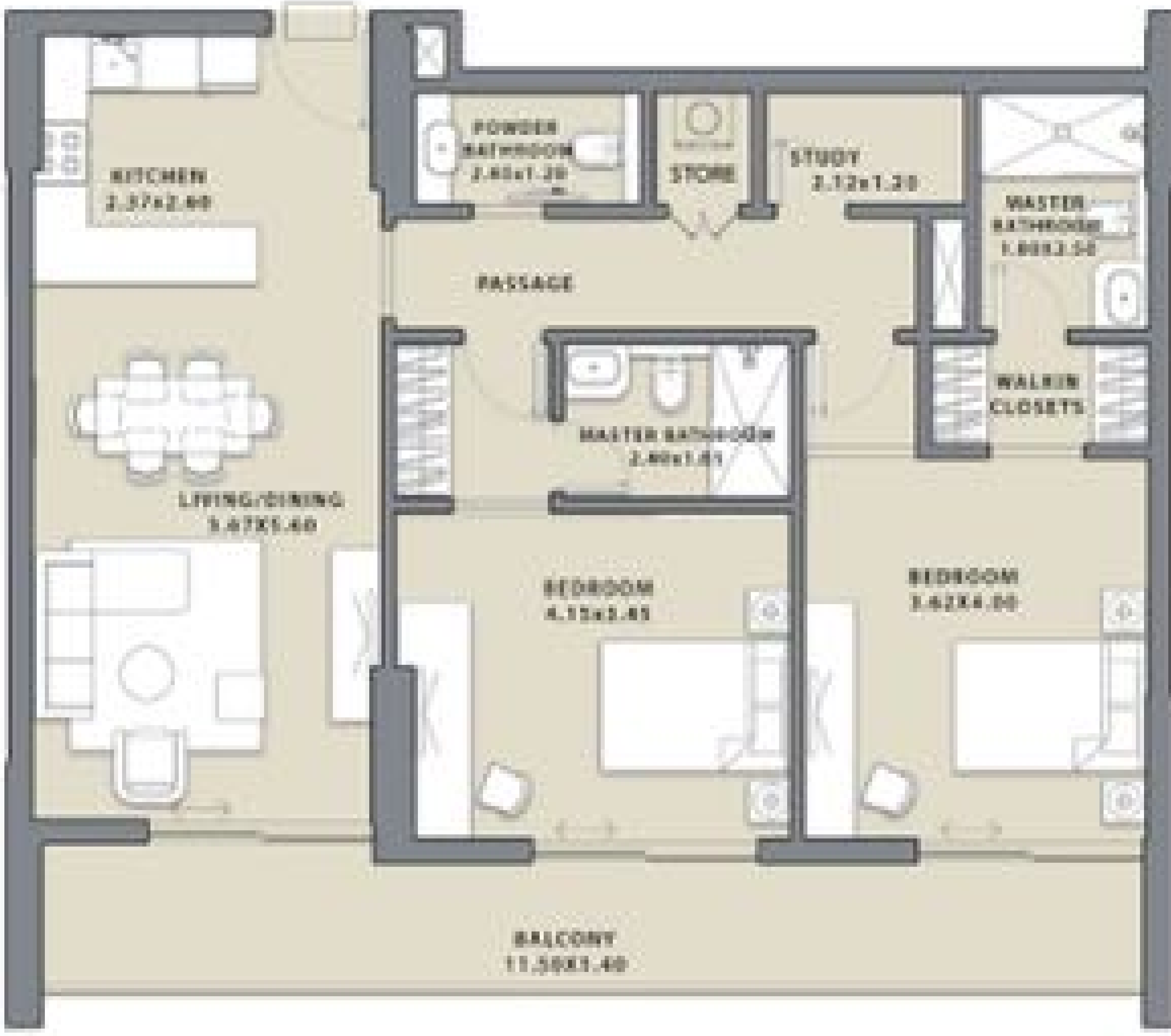
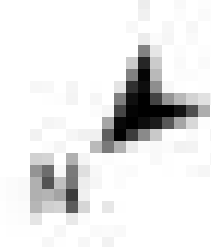
2 BEDROOM	Type A
-----------	--------

SALEABLE AREA		
	sq.m	sq.ft
Suite Area	86.03	926
Balcony Area	28.52	307
Total Area	114.55	1233



2 BEDROOM	Type B
-----------	--------

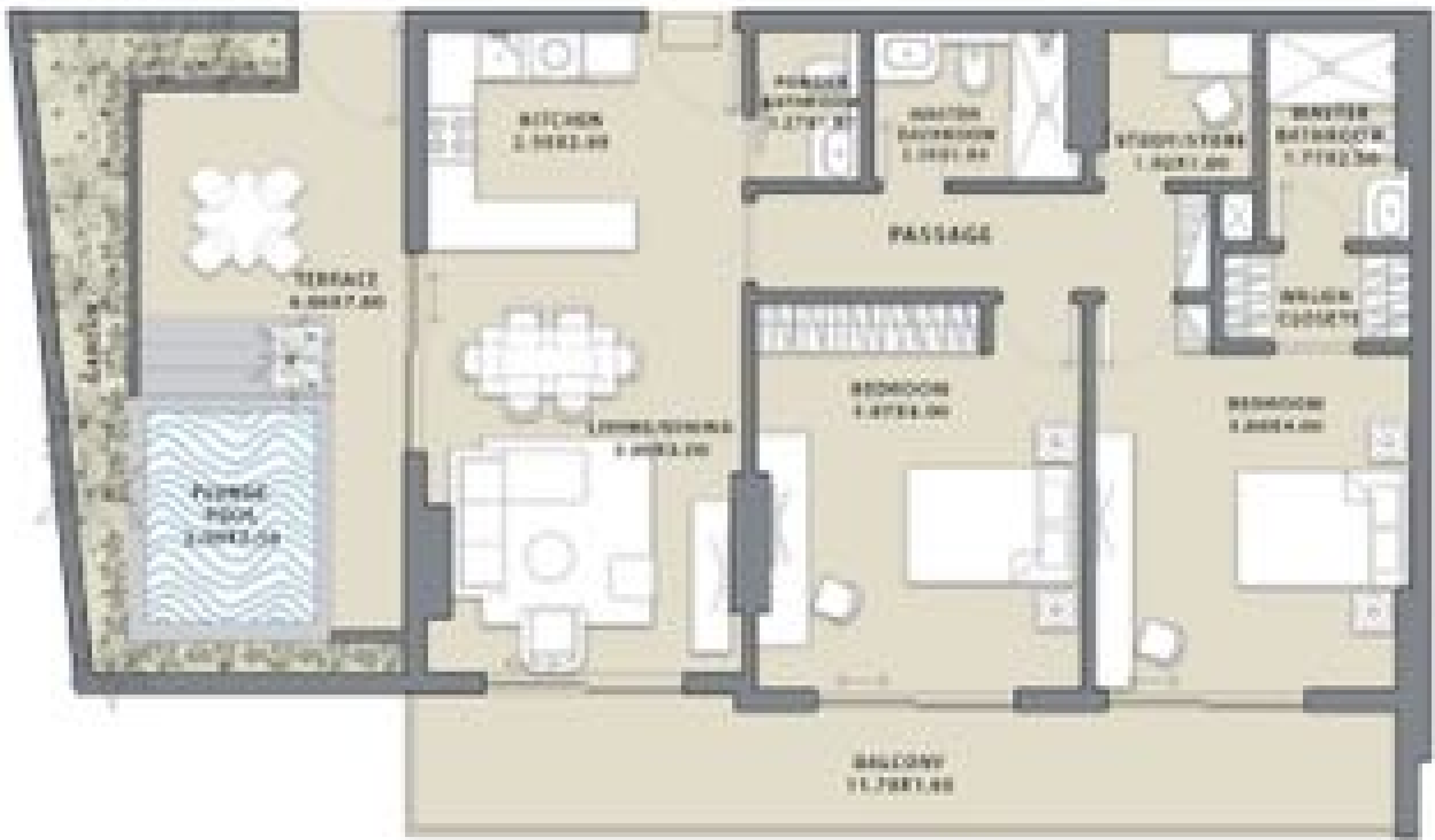
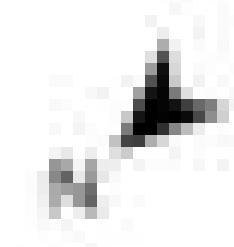
SALEABLE AREA		
	sq.m	sq.ft
Suite Area	95.97	1033
Balcony Area	17.74	191
Total Area	113.71	1224



2 BEDROOM

Type C

SALEABLE AREA		
	sq.m	sq.ft
Suite Area	95.69	1030
Balcony Area	17.74	191
Total Area	113.43	1221



2 BEDROOM

Type D

SALEABLE AREA		
	sq.m	sq.ft
Suite Area	93.83	1010
Balcony Area	52.12	561
Total Area	145.95	1571

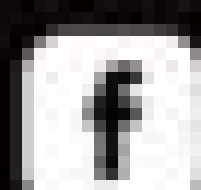


Disclaimer: All pictures, plans, layouts, data and details included in this floor plans are indicative only and may change at any time upto their final 'as built' status in accordance with the final designs of the project, regulatory approvals and planning permissions.

www.prescottuae.ae



prescottuae



prescottuae



Prescottdubai



prescott-uae