



**THE RITZ-CARLTON
RESIDENCES**

DUBAI, BUSINESS BAY

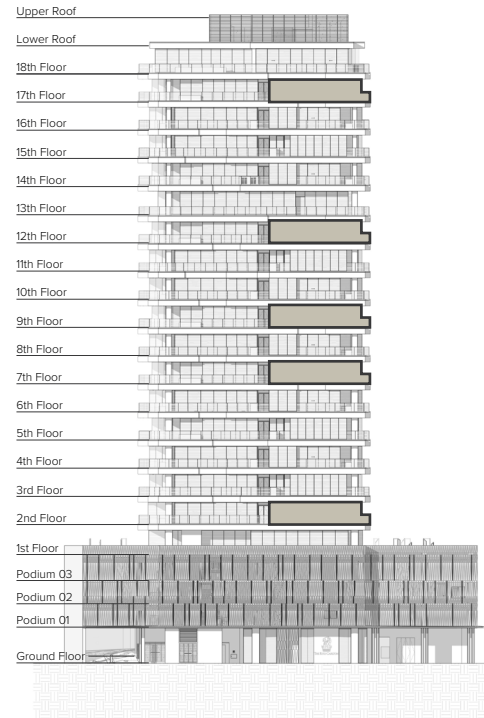
ONE-BEDROOM APARTMENT



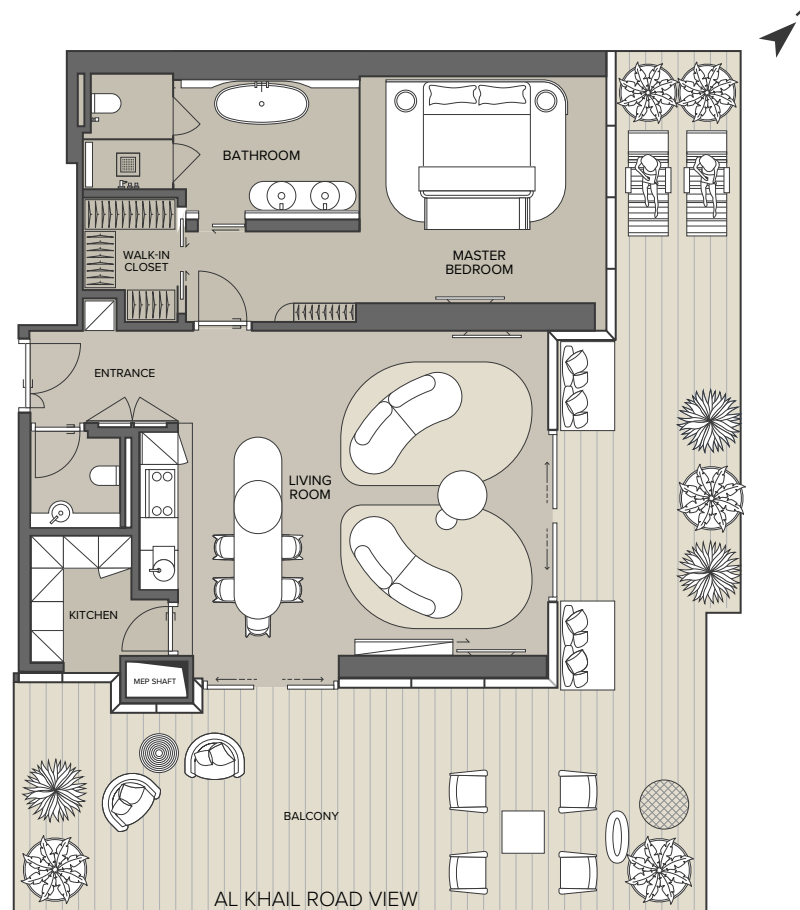
THE RITZ-CARLTON RESIDENCES

DUBAI, BUSINESS BAY

South East Elevation



DUBAI WATER CANAL VIEW



Apartment Type: **T1A**

Unit Number: **202, 701, 901, 1201 & 1701**

Internal Area: **from 1,246 ft² (115.73 m²) to 1,286 ft² (119.51 m²)**

External Area: **from 922 ft² (85.61 m²) to 977 ft² (90.81 m²)**

Total Area: **from 2,194.64 ft² (203.88 m²) to 2,238 ft² (207.915 m²)**

View: **Dubai Water Canal and Al Khail Road**

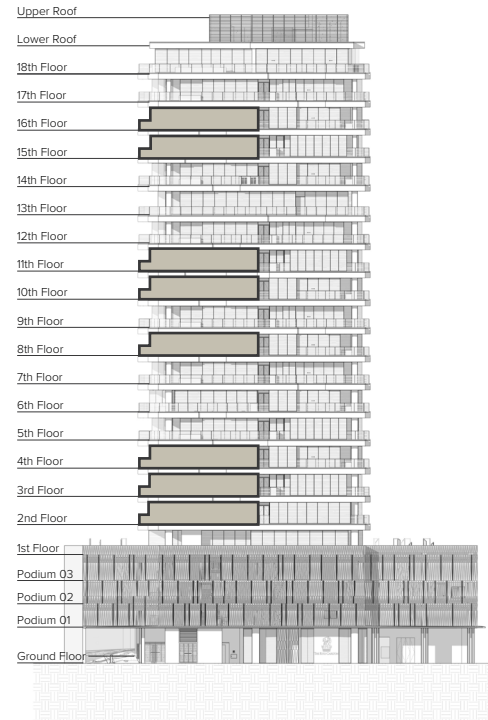
Bedrooms: **1**

Internal Area Terrace Area

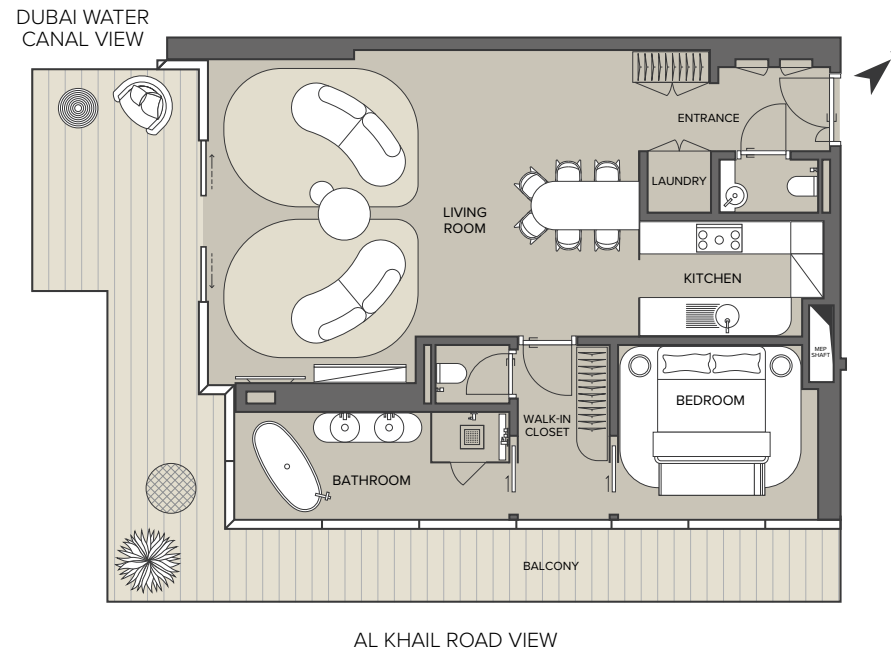
Any Concept Renderings as shown for the residences are representative only, and the Developer reserves the right to make changes or substitutions of equal or better quality for any features, materials and equipment which are included with the unit.

ONE-BEDROOM APARTMENT

South East Elevation



Internal Area Terrace Area




THE RITZ-CARLTON
RESIDENCES
 DUBAI, BUSINESS BAY

Apartment Type: **T1B**

Unit Number: **201, 301, 401, 801, 1001, 1101, 1501 & 1601**

Internal Area: **from 1,102 ft² (102.36 m²) to 1,112 ft² (103.30 m²)**

External Area: **from 328 ft² (30.48 m²) to 433 ft² (40.19 m²)**

Total Area: **from 1,436.7 ft² (133.47 m²) to 1,542.51 ft² (143.30 m²)**

View: **Dubai Water Canal and Al Khail Road**

Bedrooms: **1**

Any Concept Renderings as shown for the residences are representative only, and the Developer reserves the right to make changes or substitutions of equal or better quality for any features, materials and equipment which are included with the unit.

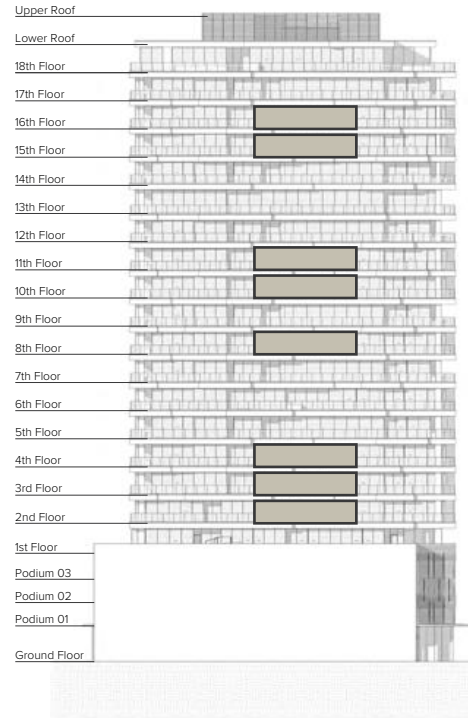
TWO-BEDROOM APARTMENT



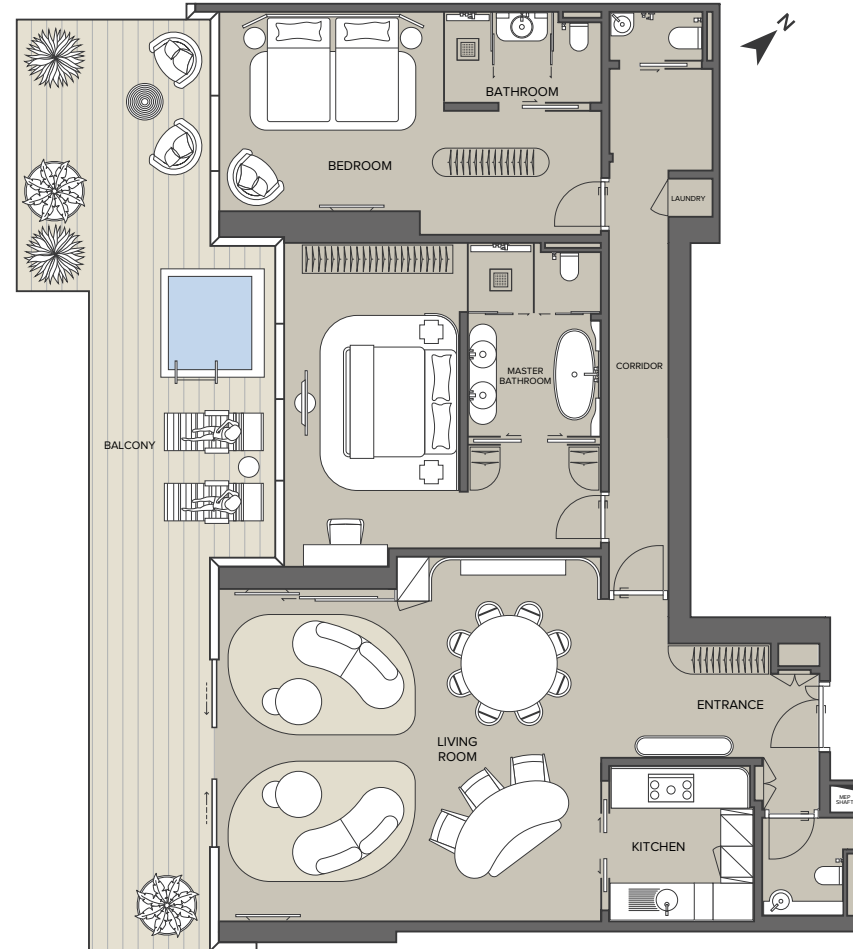
THE RITZ-CARLTON RESIDENCES

DUBAI, BUSINESS BAY

South West Elevation



DUBAI WATER
CANAL VIEW



AL KHAIL ROAD VIEW

Pool Area Internal Area Terrace Area

Apartment Type: **T2B**

Unit Number: **203, 303, 403, 803,
1003, 1103, 1503 & 1603**

Internal Area: **from 1,871.33 ft²
(173.85 m²) to 1,900 ft² (176.51 m²)**

External Area: **from 549.41 ft²
(51.04 m²) to 621.40 ft² (57.73 m²)**

Total Area: **from 2,372.36 ft²
(220.4 m²) to 2,502.38 ft²
(232.48 m²)**

View: **Dubai Water Canal
and Al Khail Road**

Bedrooms: **2**

Any Concept Renderings as shown for the residences are representative only, and the Developer reserves the right to make changes or substitutions of equal or better quality for any features, materials and equipment which are included with the unit.

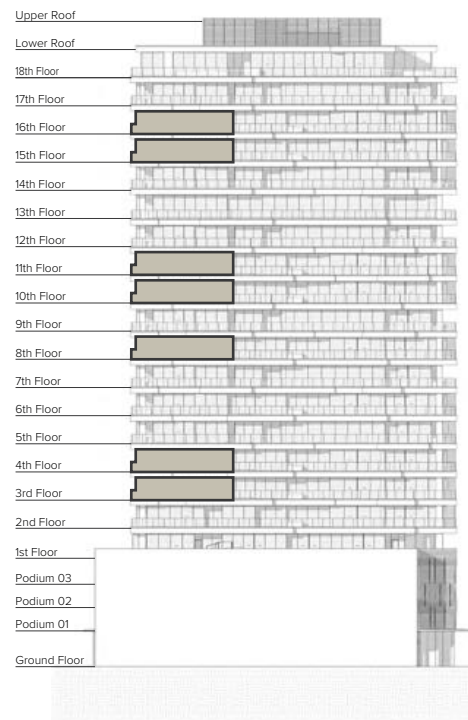
TWO-BEDROOM APARTMENT



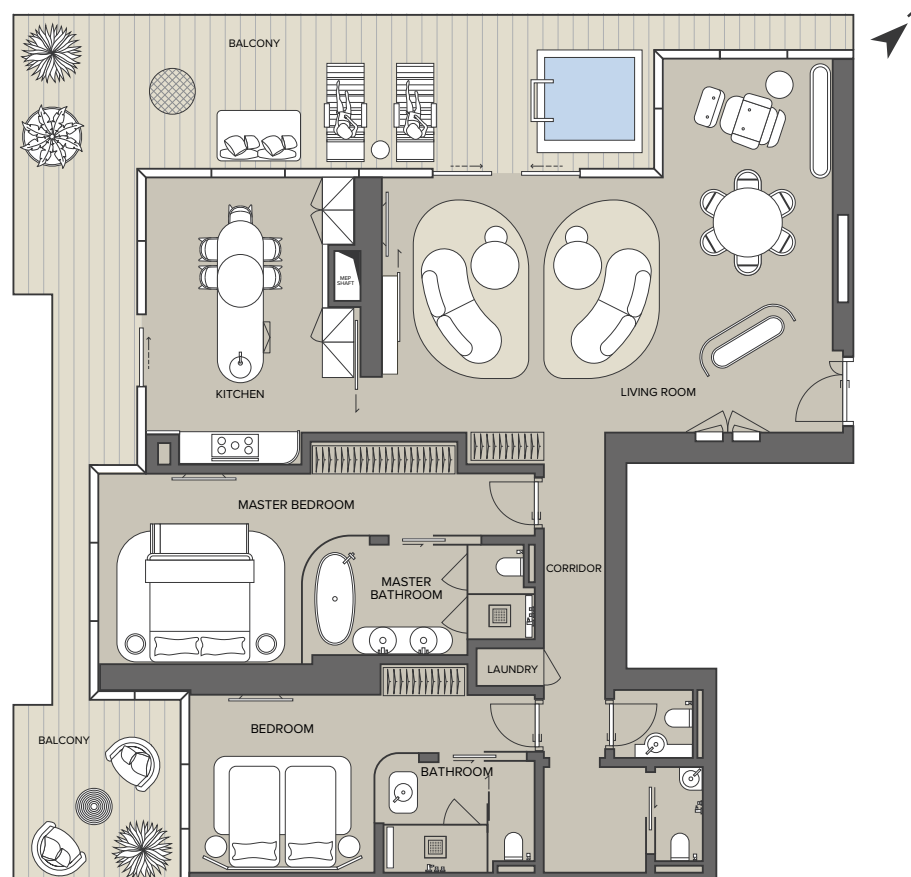
**THE RITZ-CARLTON
RESIDENCES**

DUBAI, BUSINESS BAY

South West Elevation



DUBAI WATER CANAL VIEW



Apartment Type: **T2C**

Unit Number: **305, 405, 805, 1005,
1105, 1505 & 1605**

Internal Area: **1,806.09 ft² (167.79 m²)
to 1,834.30 ft² (170.41 m²)**

External Area: **from 713.77 ft²
(66.31 m²) to 757.76 ft² (70.40 m²)**

Total Area: **from 2,534.83 ft²
(235.49 m²) to 2,565.70 ft²
(238.36 m²)**

View: **Dubai Water Canal**

Bedrooms: **2**

Pool Area Internal Area Terrace Area

Any Concept Renderings as shown for the residences are representative only, and the Developer reserves the right to make changes or substitutions of equal or better quality for any features, materials and equipment which are included with the unit.

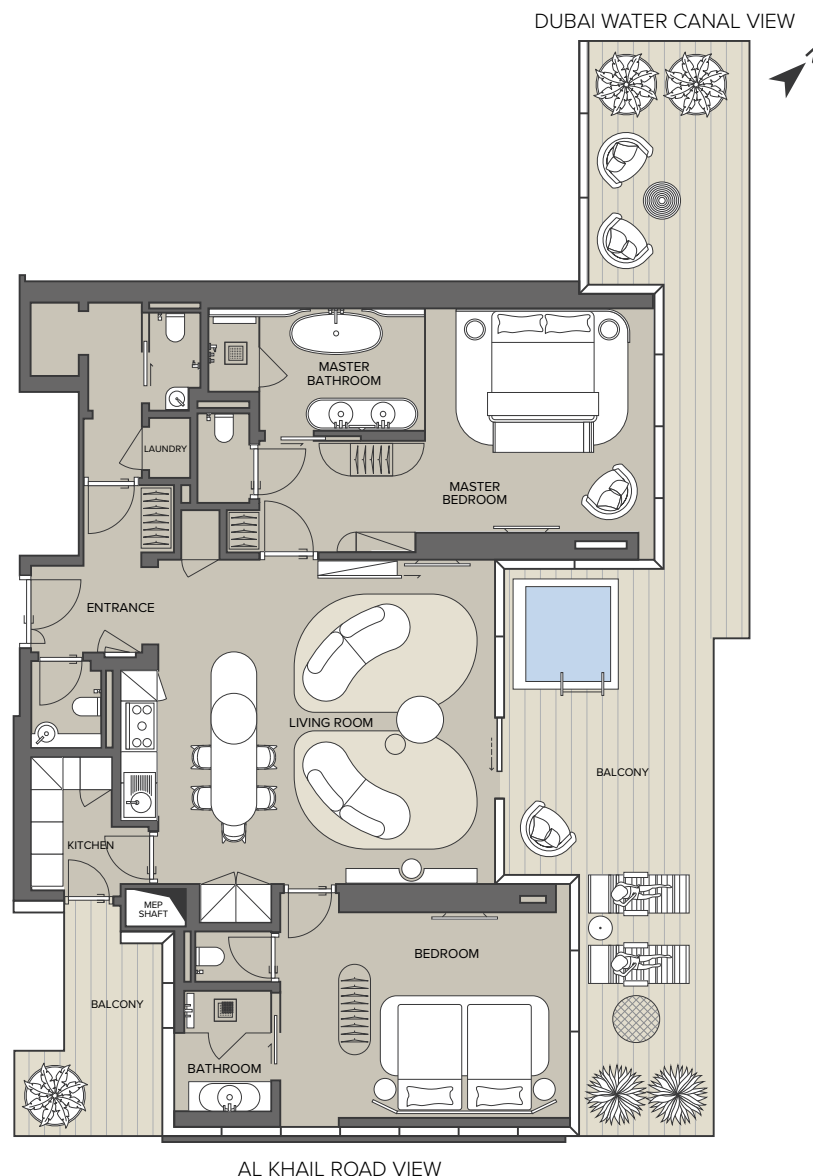
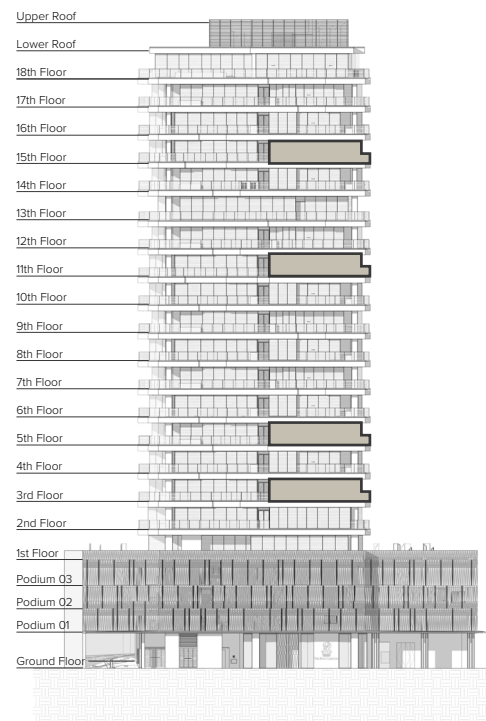
TWO-BEDROOM APARTMENT



**THE RITZ-CARLTON
RESIDENCES**

DUBAI, BUSINESS BAY

South East Elevation



Pool Area Internal Area Terrace Area

AL KHAİL ROAD VIEW

Apartment Type: **T2D**

Unit Number: **302, 501, 1102 & 1502**

Internal Area: **from 1,574.23 ft²
(146.25 m²) to 1,596.85 ft²
(148.35 m²)**

External Area: **from 610.68 ft²
(56.73 m²) to 771.54 ft² (71.68 m²)**

Total Area: **from 2,191.68 ft²
(203.61 m²) to 2,356.70 ft²
(218.94 m²)**

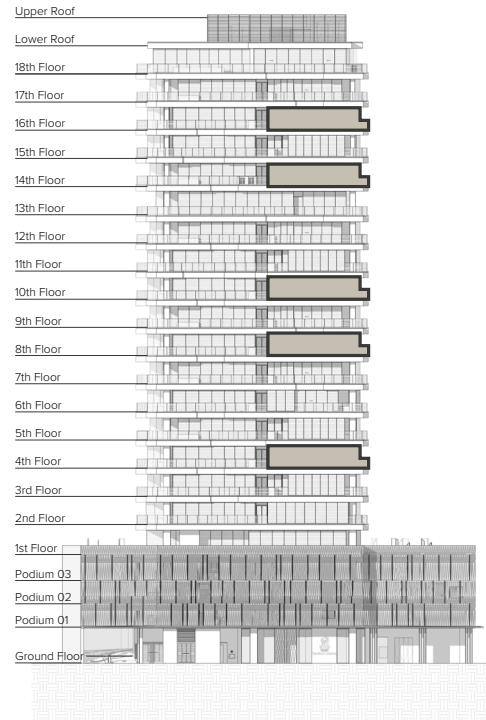
View: **Dubai Water Canal
and Al Khail Road**

Bedrooms: **2**

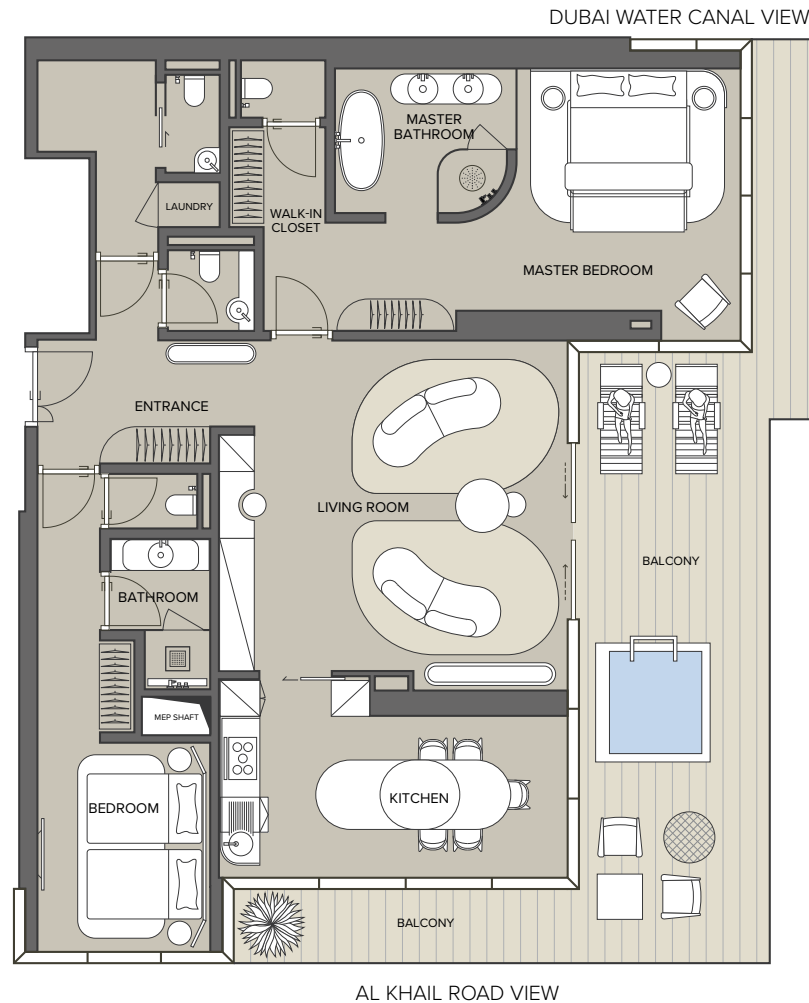
Any Concept Renderings as shown for the residences are representative only, and the Developer reserves the right to make changes or substitutions of equal or better quality for any features, materials and equipment which are included with the unit.

TWO-BEDROOM APARTMENT

South East Elevation



Pool Area
 Internal Area
 Terrace Area



**THE RITZ-CARLTON
RESIDENCES**

DUBAI, BUSINESS BAY

Apartment Type: **T2A**

Unit Number: **402, 802, 1002, 1401
& 1602**

Internal Area: **from 1,657.81 ft²
(154.01 m²) to 1,680.69 ft²
(156.17 m²)**

External Area: **from 542.05 ft²
(50.36 m²) to 716.63 ft² (66.58 m²)**

Total Area: **from 2,199.86 ft²
(204.37 m²) to 2,397.59 ft²
(222.74 m²)**

View: **Dubai Water Canal
and Al Khail Road**

Bedrooms: **2**

Any Concept Renderings as shown for the residences are representative only, and the Developer reserves the right to make changes or substitutions of equal or better quality for any features, materials and equipment which are included with the unit.

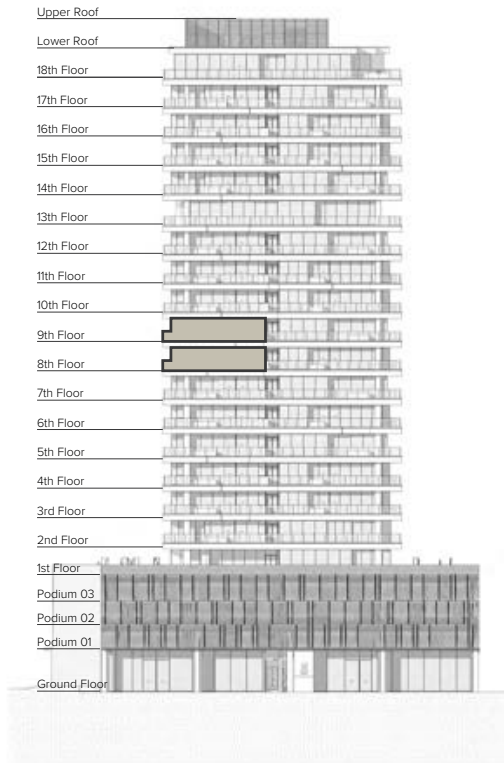
TWO-BEDROOM APARTMENT



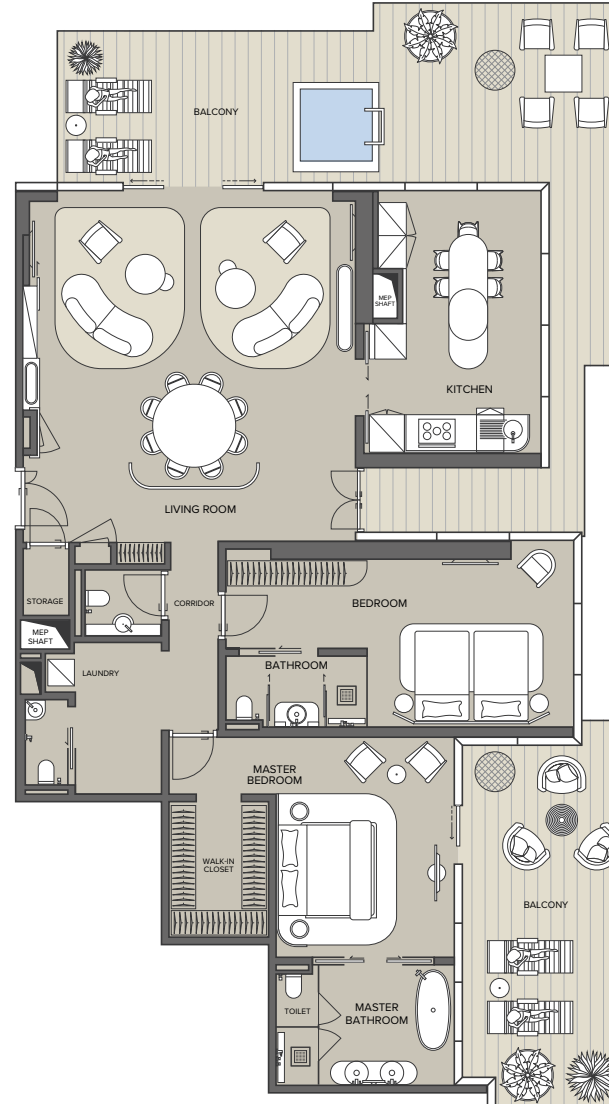
**THE RITZ-CARLTON
RESIDENCES**

DUBAI, BUSINESS BAY

North West Elevation



DUBAI WATER CANAL VIEW



Pool Area Internal Area Terrace Area

Apartment Type: **T2E**

Unit Number: **804 & 903**

Internal Area: **from 2,044.62 ft²
(189.86 m²) to 2,044.72 ft²
(189.96 m²)**

External Area: **from 1,029.38 ft²
(95.63 m²) to 1,231.17 ft² (114.38 m²)**

Total Area: **from 3,073 ft²
(285.49 m²) to 3,275.89 ft²
(304.34 m²)**

View: **Dubai Water Canal**

Bedrooms: **2**

Any Concept Renderings as shown for the residences are representative only, and the Developer reserves the right to make changes or substitutions of equal or better quality for any features, materials and equipment which are included with the unit.

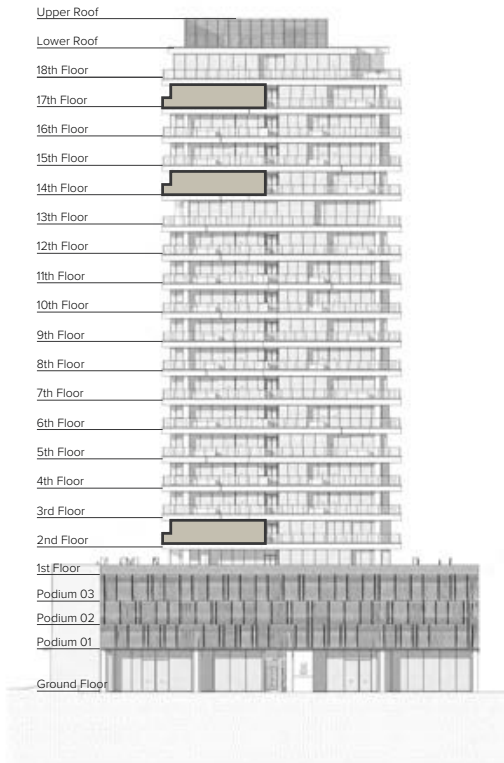
THREE-BEDROOM APARTMENT



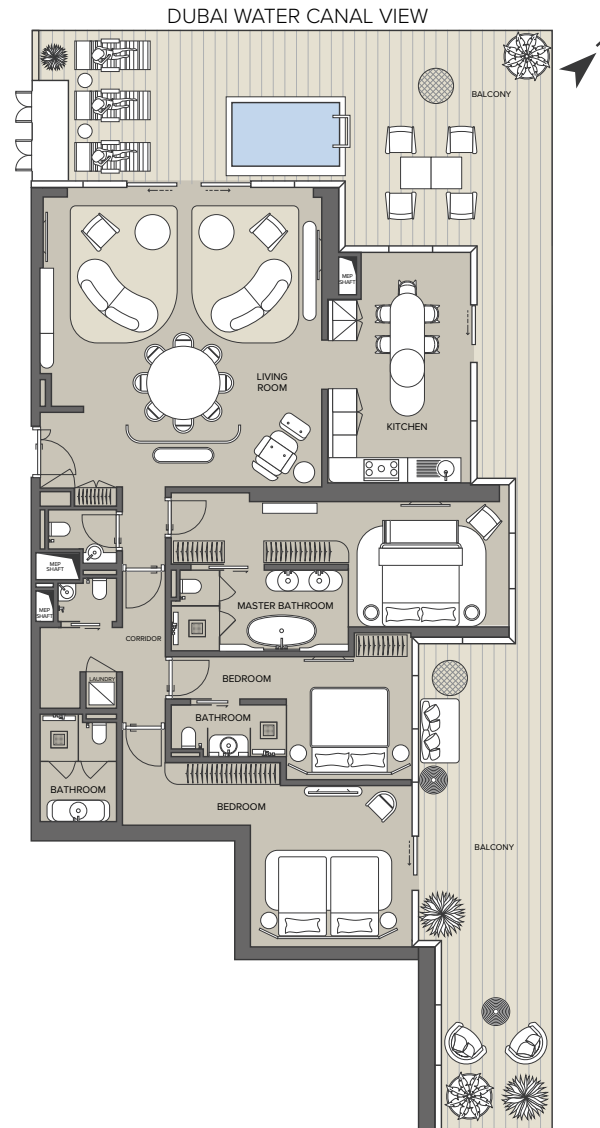
**THE RITZ-CARLTON
RESIDENCES**

DUBAI, BUSINESS BAY

North West Elevation



Pool Area Internal Area Terrace Area



Apartment Type: **T3B2**

Unit Number: **204, 1403 & 1703**

Internal Area: **from 2,134.94 ft²
(198.34 m²) to 2,165.33 ft²
(201.16 m²)**

External Area: **from 1,083 ft²
(100.62 m²) to 1,332.33 ft²
(123.78 m²)**

Total Area: **from 3,246.39 ft²
(301.60 m²) to 3,467.27 ft²
(322.12 m²)**

View: **Dubai Water Canal**

Bedrooms: **3**

Any Concept Renderings as shown for the residences are representative only, and the Developer reserves the right to make changes or substitutions of equal or better quality for any features, materials and equipment which are included with the unit.

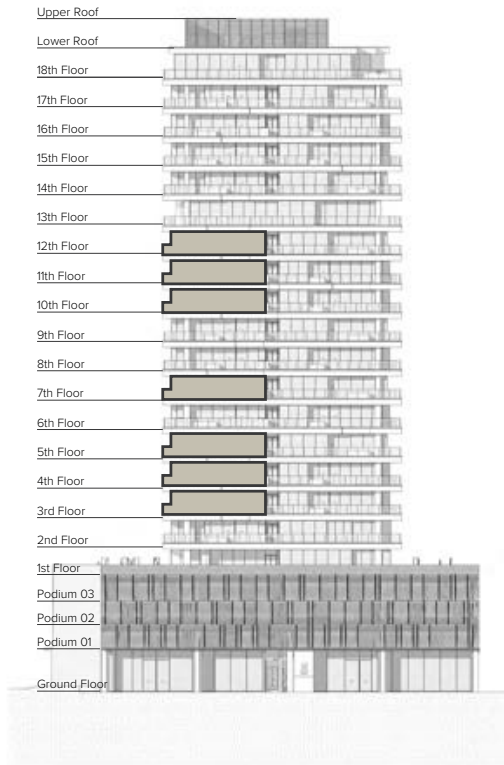
THREE-BEDROOM APARTMENT



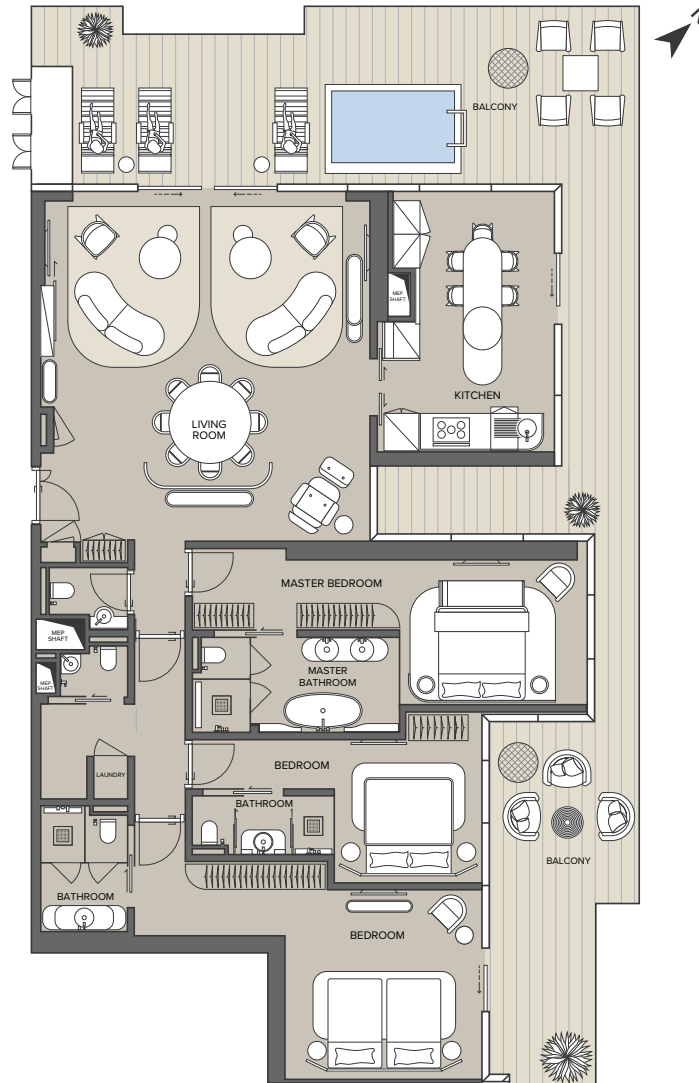
**THE RITZ-CARLTON
RESIDENCES**

DUBAI, BUSINESS BAY

North West Elevation



DUBAI WATER CANAL VIEW



Pool Area Internal Area Terrace Area

Apartment Type: **T3B1**

Unit Number: **304, 404, 503, 703,
1004, 1104, 1203, 1504 & 1604**

Internal Area: **from 2,148 ft²
(199.55 m²) to 2,189.03 ft²
(203.37 m²)**

External Area: **from 1,026 ft²
(95.35 m²) to 1,271 ft² (118.08 m²)**

Total Area: **from 3,184.68 ft²
(295.86 m²) to 3,434.81 ft²
(319.10 m²)**

View: **Dubai Water Canal**

Bedrooms: **3**

Any Concept Renderings as shown for the residences are representative only, and the Developer reserves the right to make changes or substitutions of equal or better quality for any features, materials and equipment which are included with the unit.

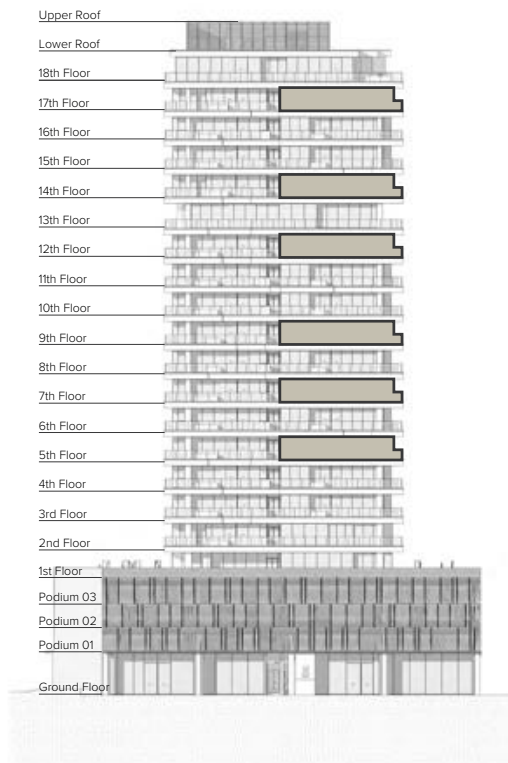
THREE-BEDROOM APARTMENT



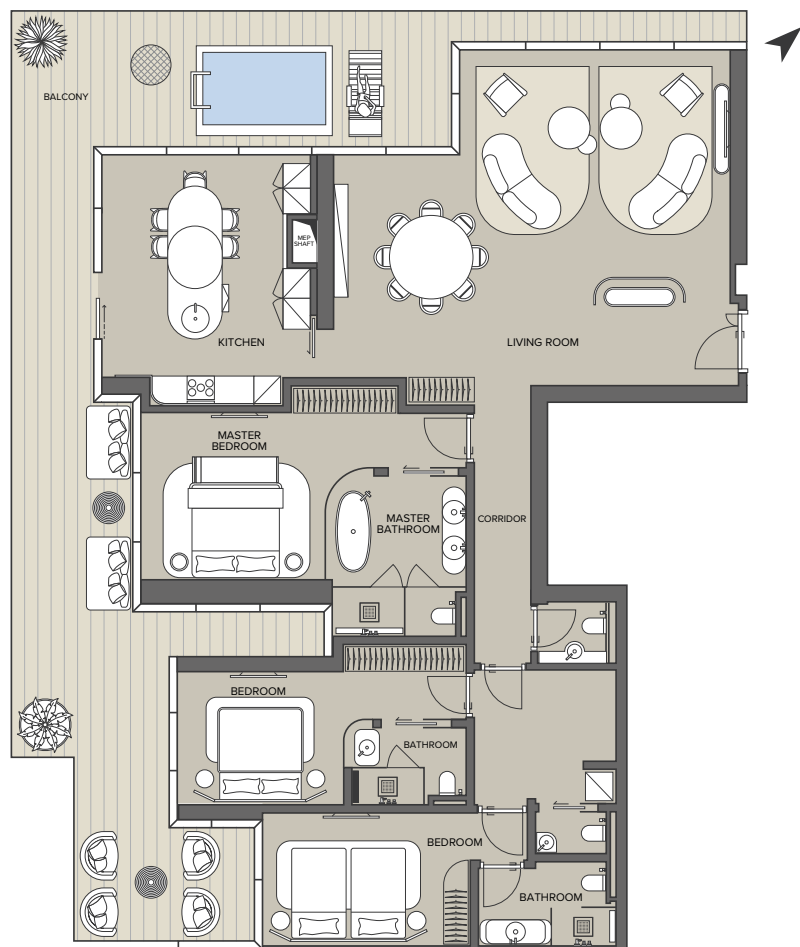
THE RITZ-CARLTON RESIDENCES

DUBAI, BUSINESS BAY

North West Elevation



DUBAI WATER CANAL VIEW



Apartment Type: **T3A**

Unit Number: **504, 704, 904, 1204,
1404 & 1704**

Internal Area: **from 2,169 ft²
(201.49 m²) to 2,198 ft² (204.21 m²)**

External Area: **from 905 ft²
(84.06 m²) to 961 ft² (89.28 m²)**

Total Area: **from 3,086.38 ft²
(286.73 m²) to 3,153.58 ft²
(292.97 m²)**

View: **Dubai Water Canal**

Bedrooms: **3**

Pool Area Internal Area Terrace Area

Any Concept Renderings as shown for the residences are representative only, and the Developer reserves the right to make changes or substitutions of equal or better quality for any features, materials and equipment which are included with the unit.

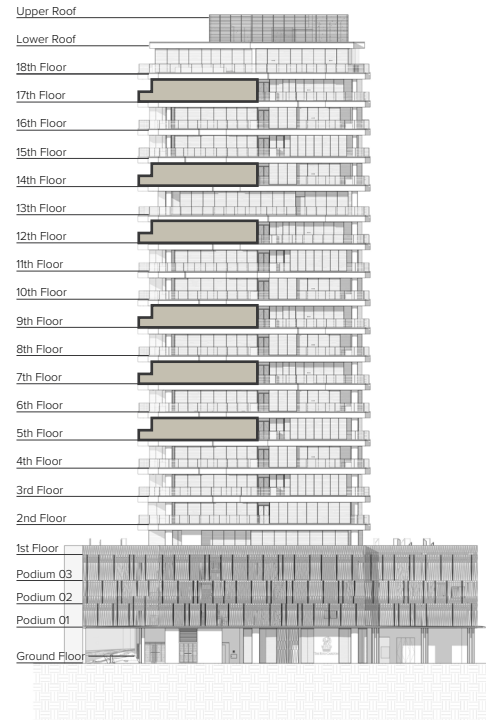
THREE-BEDROOM APARTMENT



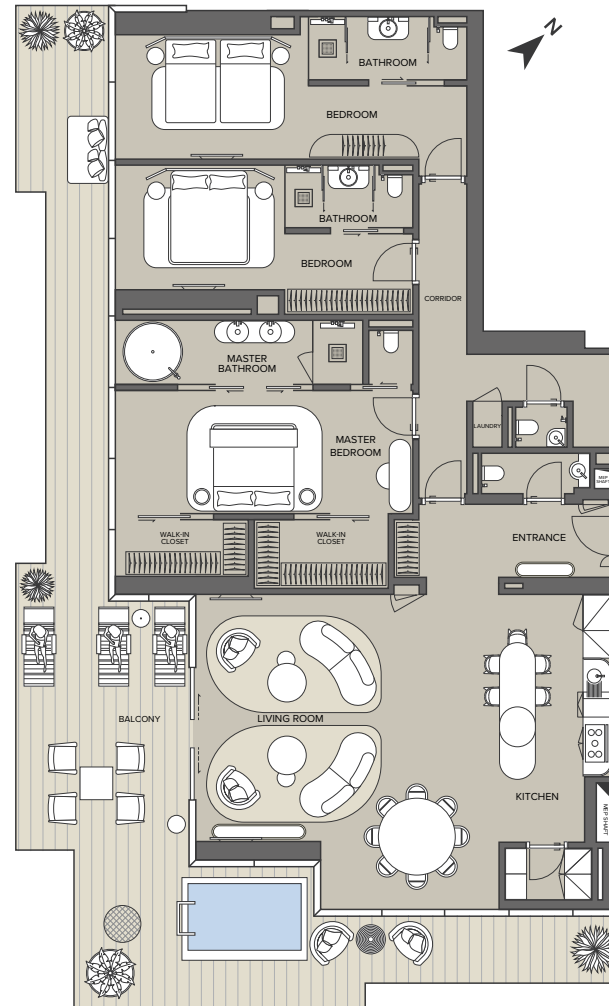
THE RITZ-CARLTON RESIDENCES

DUBAI, BUSINESS BAY

South East Elevation



DUBAI WATER
CANAL VIEW



AL KHAIL ROAD VIEW

Pool Area Internal Area Terrace Area

Apartment Type: **T3C1**

Unit Number: **502, 702, 902, 1202,
1402 & 1702**

Internal Area: **from 2,382 ft²
(221.31 m²) to 2,412 ft² (224.11 m²)**

External Area: **from 894 ft²
(83.05 m²) to 995 ft² (92.48 m²)**

Total Area: **from 3,306.36 ft²
(307.17 m²) to 3,405.46 ft²
(316.38 m²)**

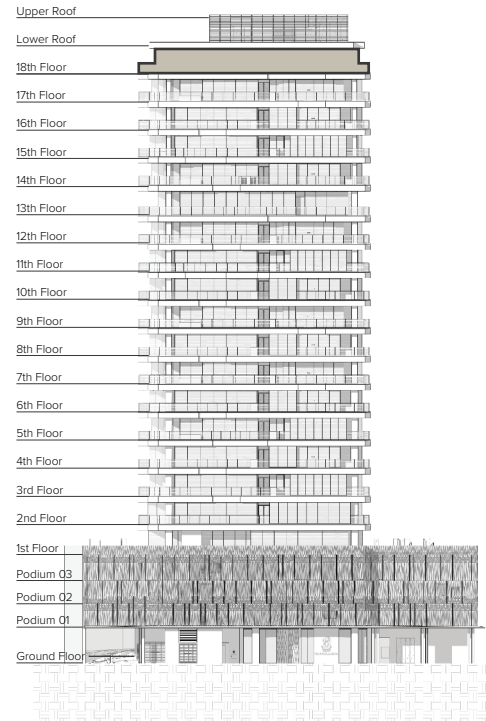
View: **Dubai Water Canal
and Al Khail Road**

Bedrooms: **3**

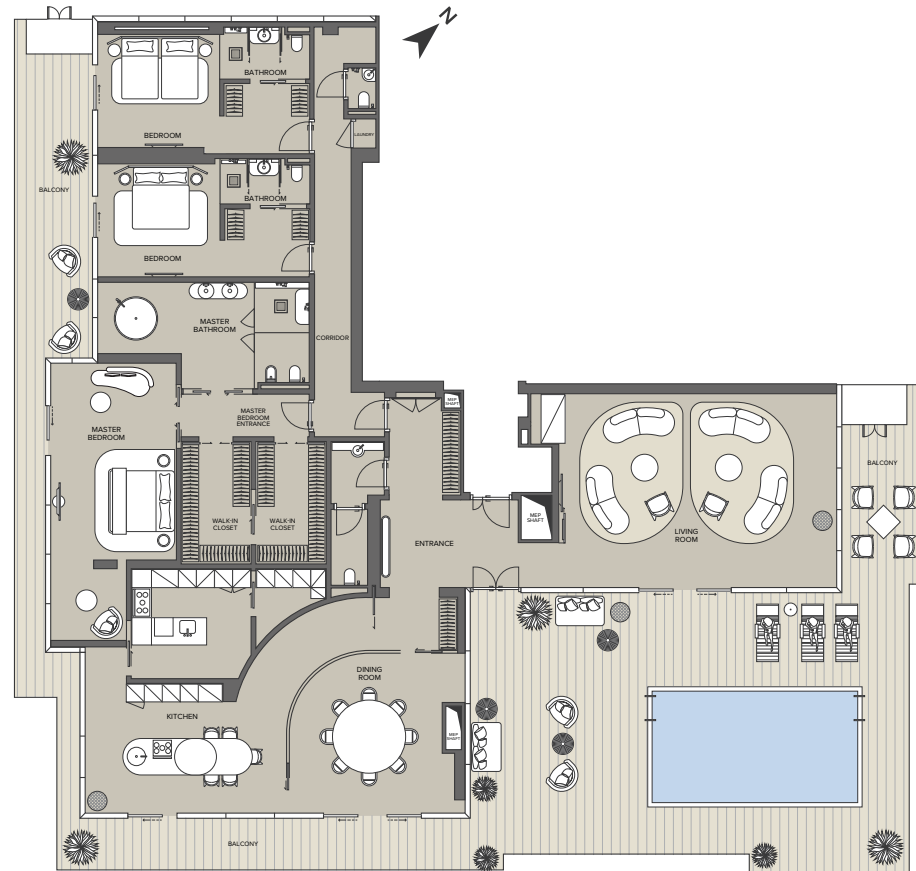
Any Concept Renderings as shown for the residences are representative only, and the Developer reserves the right to make changes or substitutions of equal or better quality for any features, materials and equipment which are included with the unit.

PENTHOUSE 1

South East Elevation



DUBAI WATER CANAL VIEW



AL KHAIL ROAD VIEW

Pool Area
 Internal Area
 Terrace Area



THE RITZ-CARLTON RESIDENCES

DUBAI, BUSINESS BAY

Apartment Type: **PEN-01**

Unit Number: **1801**

Internal Area: **4,072 ft² (378.32 m²)**

External Area: **2,315 ft² (215.07 m²)**

Total Area: **6387 ft² (593.39 m²)**

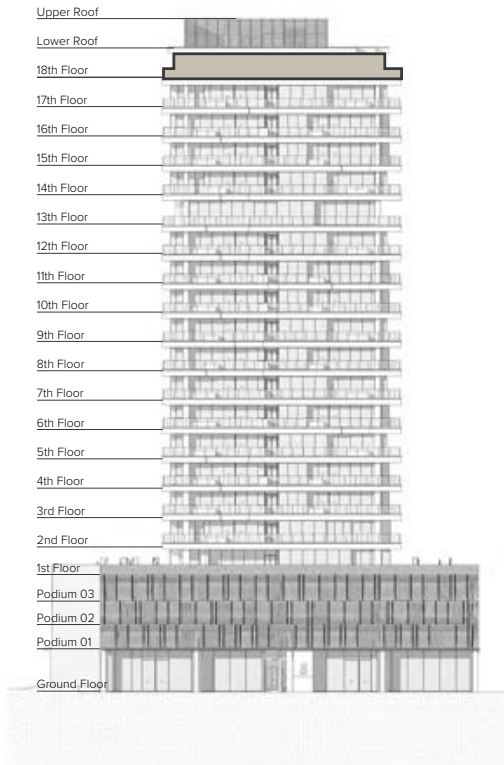
View: **Dubai Water Canal**

Bedrooms: **3**

Any Concept Renderings as shown for the residences are representative only, and the Developer reserves the right to make changes or substitutions of equal or better quality for any features, materials and equipment which are included with the unit.

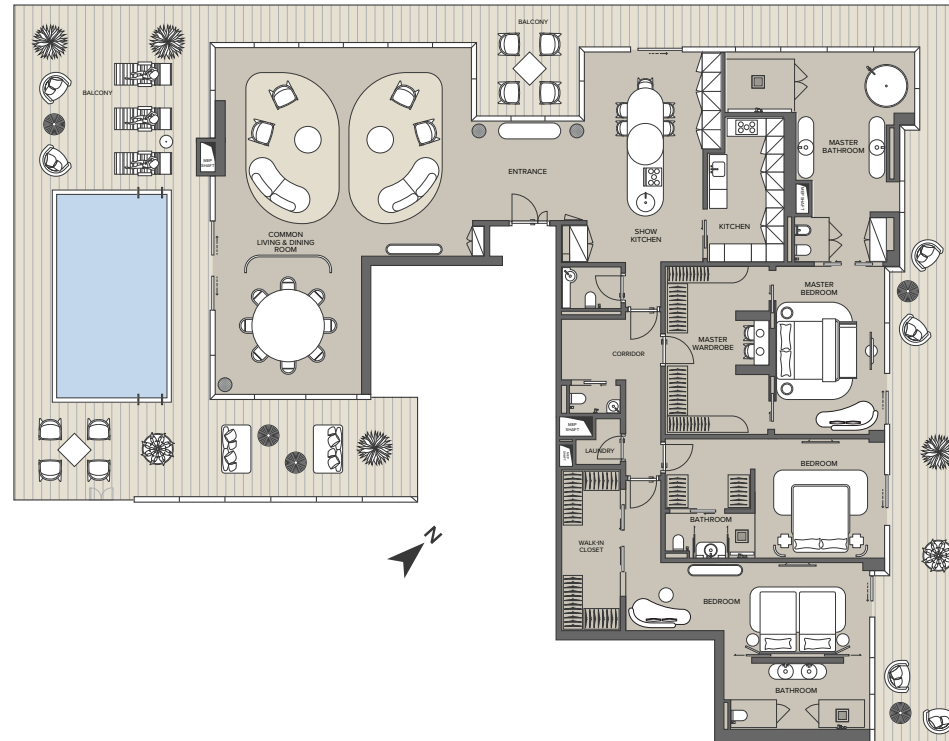
PENTHOUSE 2

North West Elevation



Pool Area
 Internal Area
 Terrace Area

DUBAI WATER CANAL VIEW



AL KHAİL
ROAD VIEW



**THE RITZ-CARLTON
RESIDENCES**

DUBAI, BUSINESS BAY

Apartment Type: **PEN-02**

Unit Number: **1802**

Internal Area: **3,656 ft² (339.61 m²)**

External Area: **2,467 ft² (229.1 m²)**

Total Area: **6,123 ft² (568.77 m²)**

View: **Dubai Water Canal
and Al Khail Road**

Bedrooms: **3**

Any Concept Renderings as shown for the residences are representative only, and the Developer reserves the right to make changes or substitutions of equal or better quality for any features, materials and equipment which are included with the unit.

VILLA

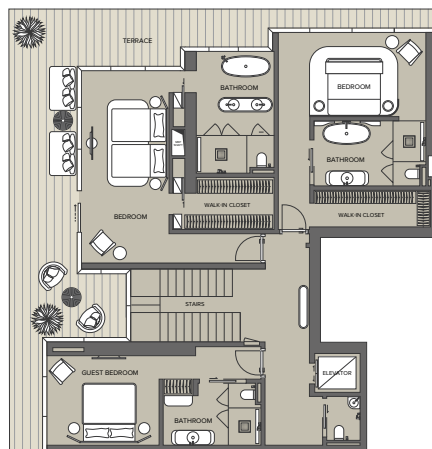


THE RITZ-CARLTON RESIDENCES

DUBAI, BUSINESS BAY

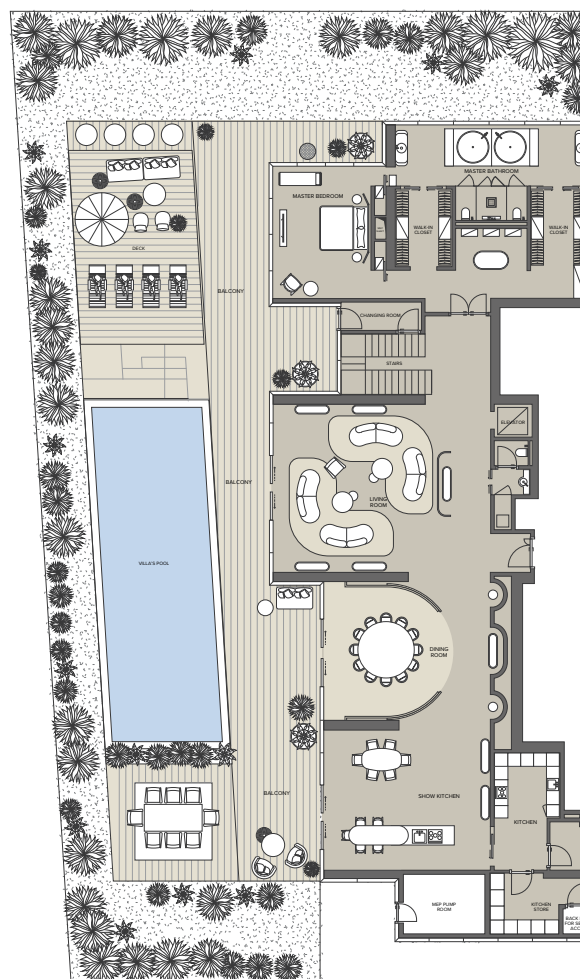
2nd Floor Plan

DUBAI WATER CANAL VIEW



1st Floor Plan

DUBAI WATER CANAL VIEW



■ Pool Area
 ■ Internal Area
 ■ Terrace Area

Apartment Type: **VILLA**

Unit Number: **101**

Internal Area: **6,172 ft² (573.36 m²)**

External Area: **7,207 ft² (669.5 m²)**

Total Area: **13,379 ft² (1242.9 m²)**

View: **Dubai Water Canal**

Bedrooms: **4**

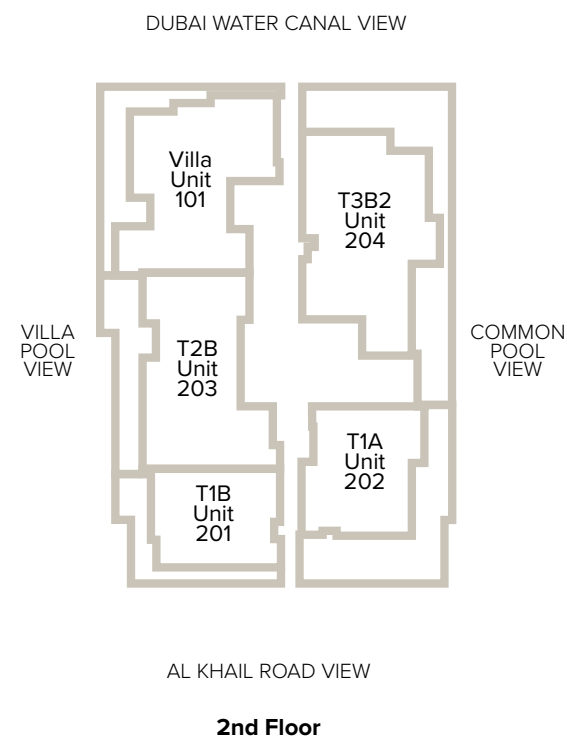
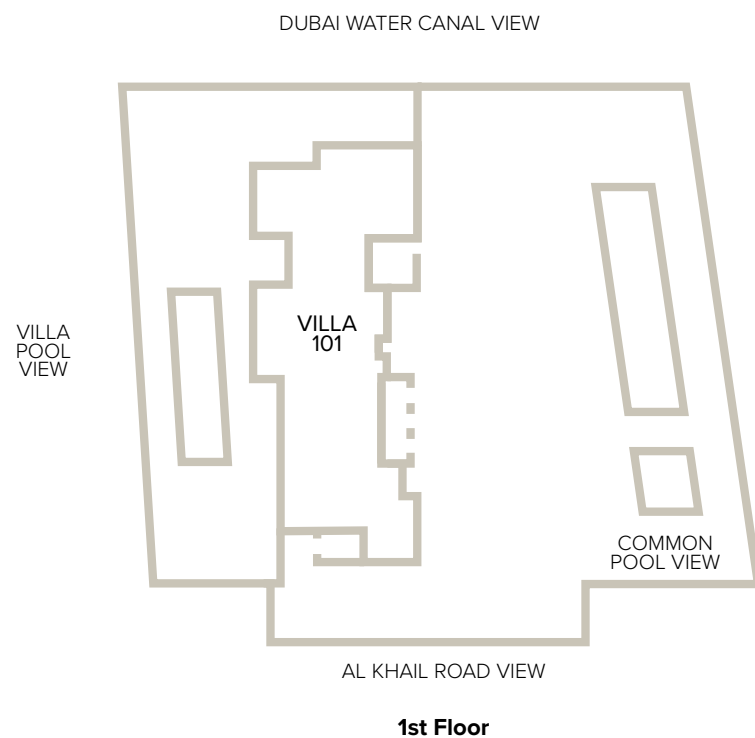
Any Concept Renderings as shown for the residences are representative only, and the Developer reserves the right to make changes or substitutions of equal or better quality for any features, materials and equipment which are included with the unit.

FLOORS 1 & 2



**THE RITZ-CARLTON
RESIDENCES**

DUBAI, BUSINESS BAY



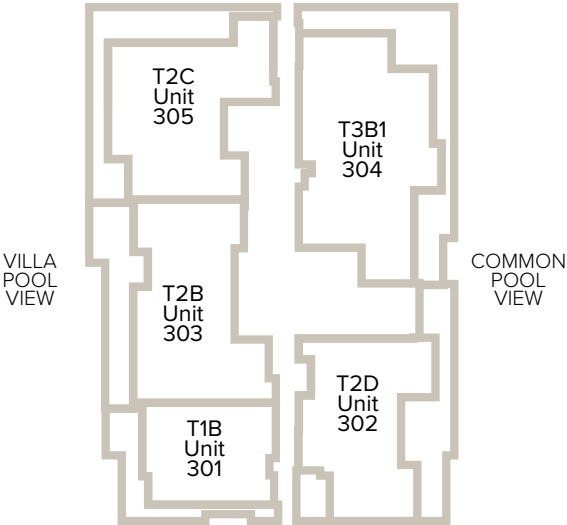
FLOORS 3, 4 & 5



THE RITZ-CARLTON
RESIDENCES

DUBAI, BUSINESS BAY

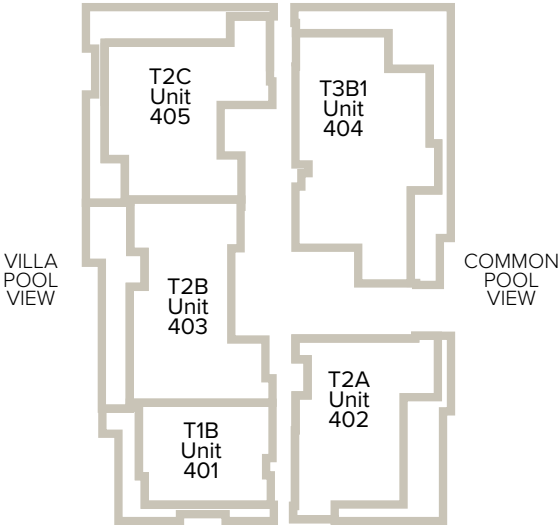
DUBAI WATER CANAL VIEW



AL KHAIL ROAD VIEW

3rd Floor

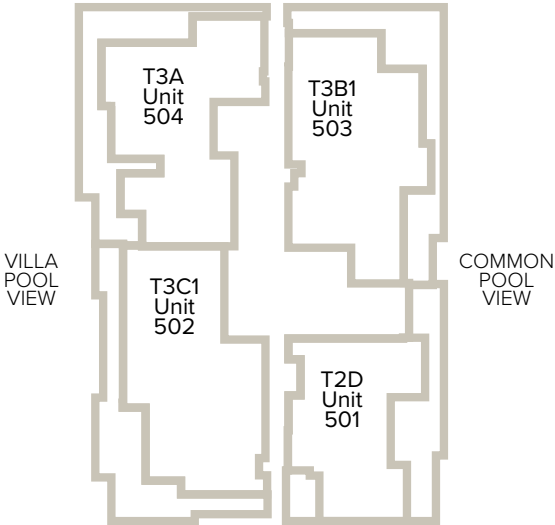
DUBAI WATER CANAL VIEW



AL KHAIL ROAD VIEW

4th Floor

DUBAI WATER CANAL VIEW



AL KHAIL ROAD VIEW

5th Floor

Any Concept Renderings as shown for the residences are representative only, and the Developer reserves the right to make changes or substitutions of equal or better quality for any features, materials and equipment which are included with the unit.

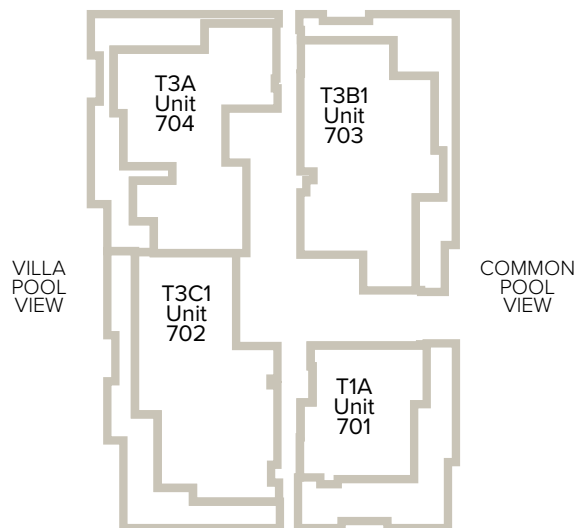
FLOORS 7, 8 & 9



**THE RITZ-CARLTON
RESIDENCES**

DUBAI, BUSINESS BAY

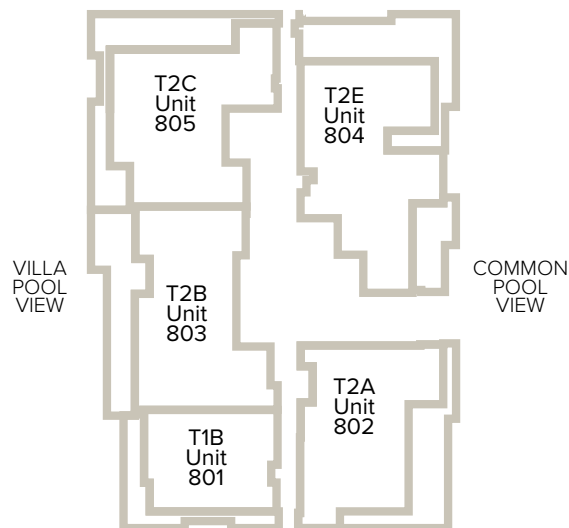
DUBAI WATER CANAL VIEW



AL KHAIL ROAD VIEW

7th Floor

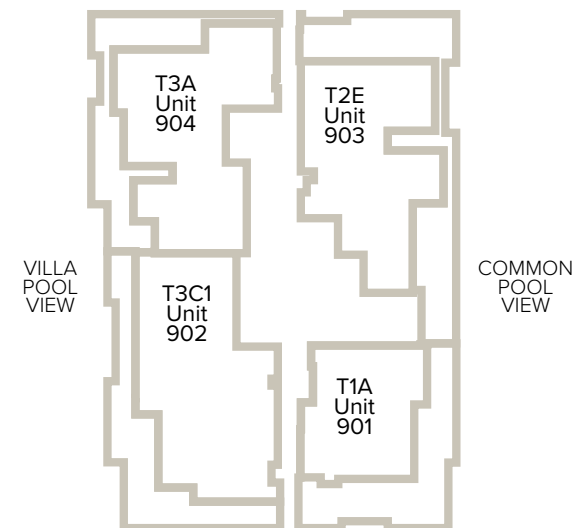
DUBAI WATER CANAL VIEW



AL KHAIL ROAD VIEW

8th Floor

DUBAI WATER CANAL VIEW



AL KHAIL ROAD VIEW

9th Floor

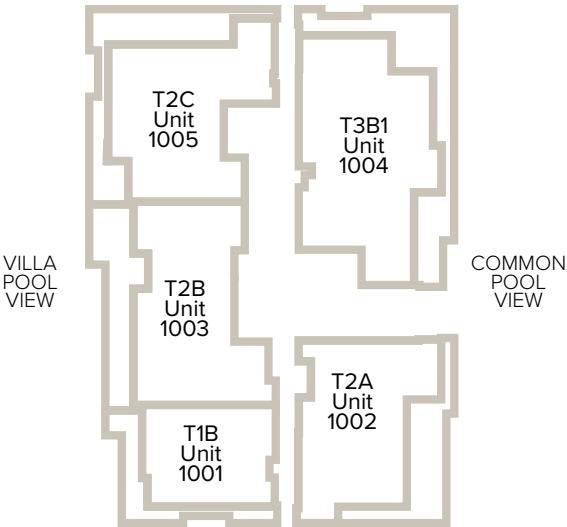
FLOORS 10, 11, & 12



**THE RITZ-CARLTON
RESIDENCES**

DUBAI, BUSINESS BAY

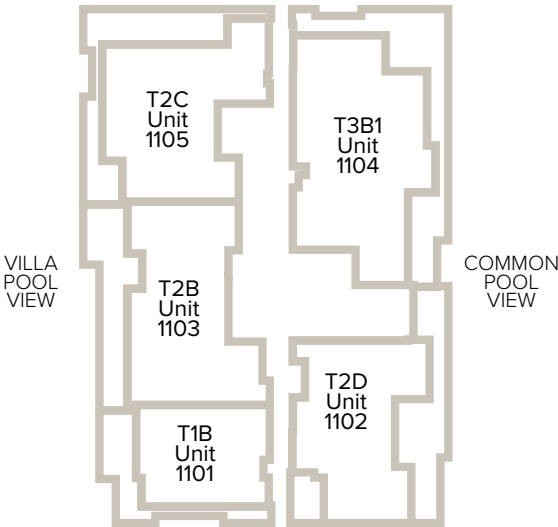
DUBAI WATER CANAL VIEW



AL KHAIL ROAD VIEW

10th Floor

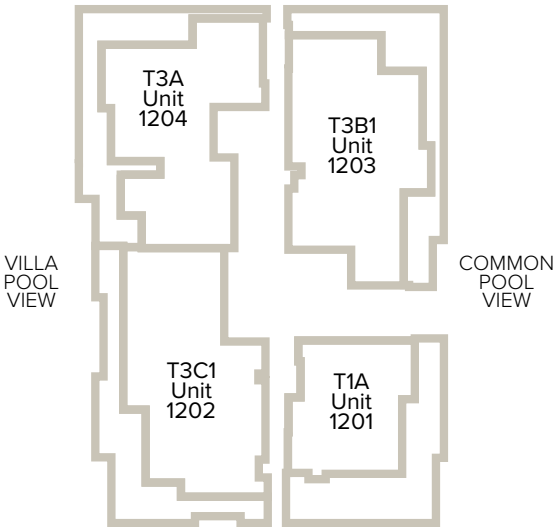
DUBAI WATER CANAL VIEW



AL KHAIL ROAD VIEW

11th Floor

DUBAI WATER CANAL VIEW



AL KHAIL ROAD VIEW

12th Floor

Any Concept Renderings as shown for the residences are representative only, and the Developer reserves the right to make changes or substitutions of equal or better quality for any features, materials and equipment which are included with the unit.

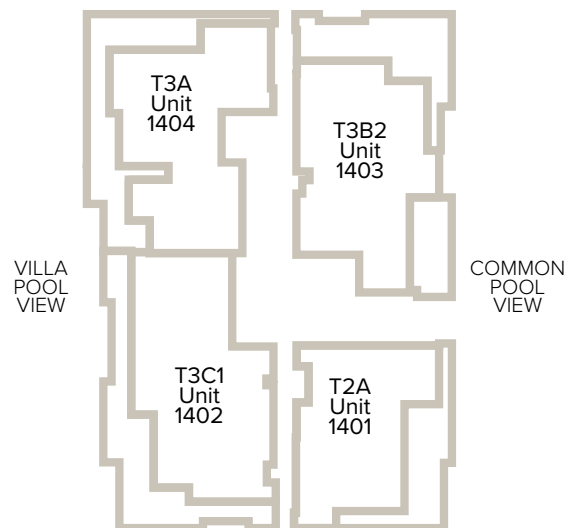
FLOORS 14, 15 & 16



**THE RITZ-CARLTON
RESIDENCES**

DUBAI, BUSINESS BAY

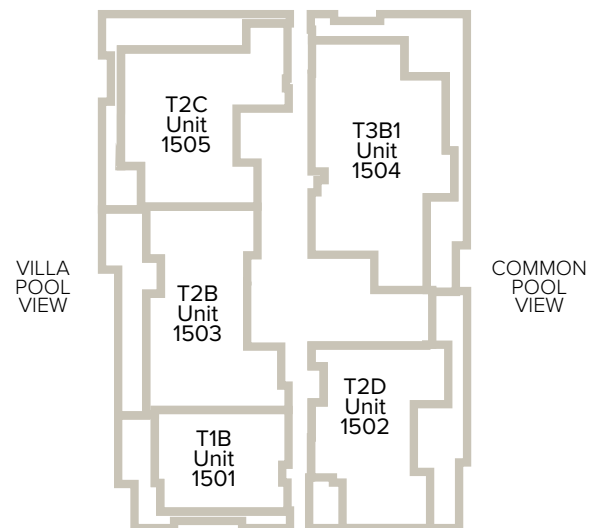
DUBAI WATER CANAL VIEW



AL KHAIL ROAD VIEW

14th Floor

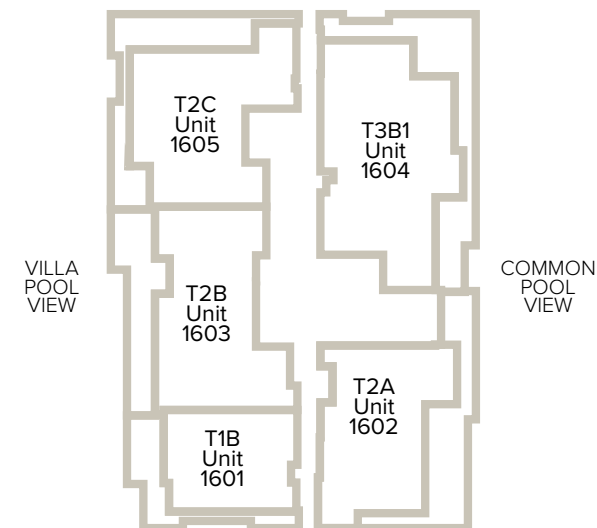
DUBAI WATER CANAL VIEW



AL KHAIL ROAD VIEW

15th Floor

DUBAI WATER CANAL VIEW



AL KHAIL ROAD VIEW

16th Floor

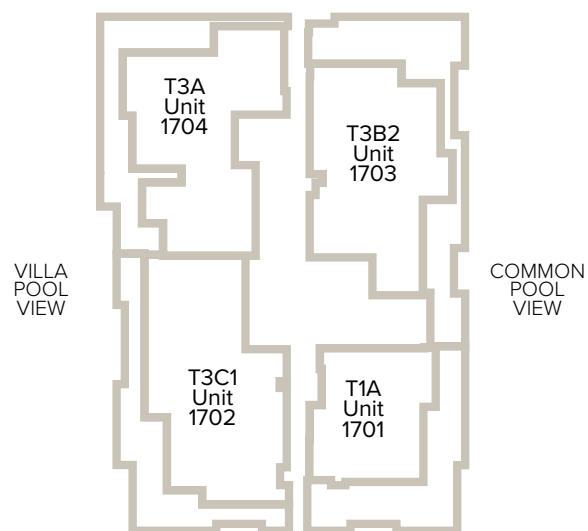
FLOORS 17 & 18



**THE RITZ-CARLTON
RESIDENCES**

DUBAI, BUSINESS BAY

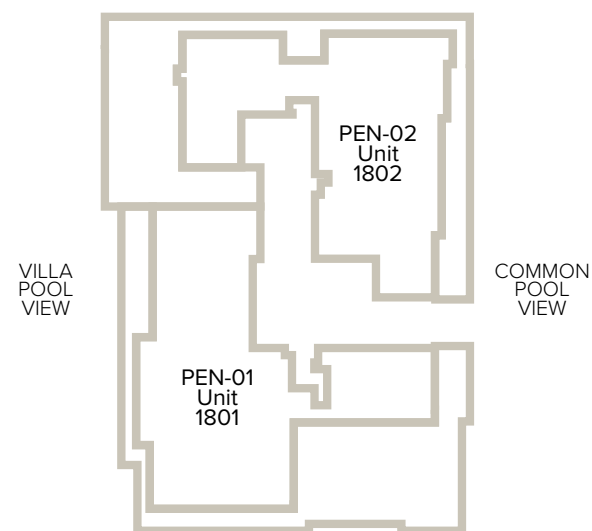
DUBAI WATER CANAL VIEW



AL KHAIL ROAD VIEW

17th Floor

DUBAI WATER CANAL VIEW



AL KHAIL ROAD VIEW

18th Floor



THE RITZ-CARLTON RESIDENCES

DUBAI, BUSINESS BAY

The Ritz-Carlton Residences, Dubai, Business Bay are not owned, developed or sold by Global Hospitality Licensing S.a.r.l or its affiliates ("Ritz-Carlton"). GHL uses The Ritz-Carlton marks under a license from Ritz-Carlton, which has not confirmed the accuracy of any of the statements or representations made herein.